

5

SCREENING

5.2

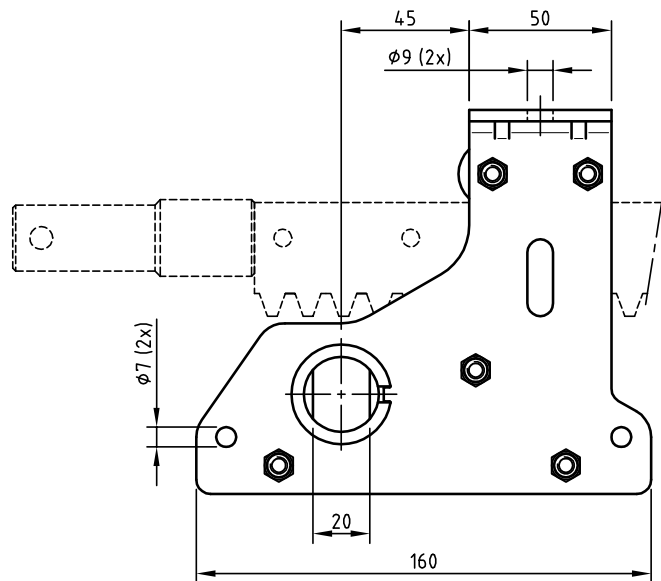
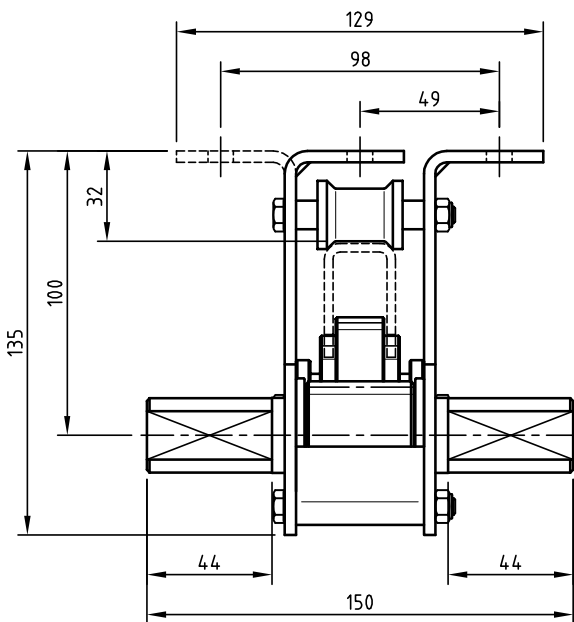
THG40-UNIT



The THG40 rack box forms part of a screen system and is mounted under the truss. The rack box is driven by a GW motor gearbox and drives the pull-push tube by means of a gear rack.

The THG40 has sinter bronze slide bearings and high-grade, solid plastic guide rollers for the pinion and gear rack.

The THG40 is also available with locking rings. The entry shaft of the gearcase can be connected with the 1" or 5/4" drive tubes by means of slide joint chain coupling sets, slide joint couplings and shaft locking clips. The THG40 can also be supplied with a mirrored side plate if the rack box is to be mounted under the truss with a clamping set.



Description	T [Nm]	i [-]	s [mm/rev]	m [kg]	Article number
THG40 standard rack box	5.71	1.82	75.80	2.15	P.THG40.UNIT
THG40 for clamping set	5.71	1.82	75.80	2.15	P.THG40.UNIT.K