

ORION Poultry computer



In modern poultry farming it is crucial to identify and record the right indicators in order to optimise production. This allows you to quickly detect, analyse and avoid adverse influences.

The ideal management system for all poultry farmers

The ORION poultry computer helps to optimise or improve production. Hotraco Agri offers a suitable management system for every branch in the poultry farming sector, which can be adapted to meet specific needs or requirements. All processes in the poultry house can be checked and controlled on a single display from one central location and keyboard – no further actions required. This keeps investment and installation costs to a minimum.

Operation

ORION has a wide range of control functions and can monitor and manage all conceivable situations. Control processes for ventilation, heating, cooling, feed registration, water and light have been incorporated into all ORION computers as a standard. A specific ORION computer with accompanying management functions is available for all animals and all stall types.

Various ventilation options

ORION is suitable for all ventilation systems, from naturally ventilated stalls to mechanical ventilation, ridge ventilation, longitudinal ventilation, cross ventilation and all possible combinations thereof. The ventilation level is determined by the temperature and humidity of the poultry house and the outside temperature. A CO₂ sensor or weather station (to calculate wind speed and direction) can also be connected.

Airflow / heating / cooling

ORION can regulate incoming air in one or more zones, irrespective of the type of valves or vents used. Air inlet control is calculated based on room temperature or negative pressure. With ORION, you can choose between localised or central heating or you can use a mixing fan to achieve better temperature distribution. ORION also features a cooling contact.



Stationstraat 142
5963 AC Hegelsom
The Netherlands

T +31 (0)77 327 5020
F +31 (0)77 327 5021
info@hotraco-agri.com
www.hotraco-agri.com

Hotraco Agri is a globally operating supplier of innovative computerized systems for use in the pig and poultry sectors specialised in creating and maintaining an optimum indoor climate. Hotraco Agri's main focus is on the development and manufacture of customized computers that regulate, control and monitor the overall animal house system. From climate control and air conditioning, feed and water control, animal weighing, egg counting to fire safety. Over 100 employees serve customers on all continents with innovative and technically advanced systems. The fact that Hotraco Agri has its own R&D and development department means that it is ALWAYS able to deliver customized products and develop problem-specific solutions.

Helpdesk 24/7

Hotraco's helpdesk and service centre is available 24/7. Our team has the possibility to monitor and control our clients' systems, wherever in the world, via state of the art ICT technology.

Feed / water

ORION can be used with several feed options, such as hoppers or feed wagons. The accurate feed registration system gives you a comprehensive overview of your costs. ORION is capable of flawless water consumption registration and warns you if anything changes immediately. The switch contact for a water valve allows you to choose from 24 start and stop times for your water supply.

ORION-PB

ORION-PB was specifically designed for broilers, turkeys and poultry houses with flooring systems. ORION-PB includes additional options for accurately monitoring the weight and feed requirements of your livestock. A heat exchanger can be used for minimum ventilation. The control system for this has been fully integrated, which leads to significant cost savings during the first two weeks.



Various ventilation control options:

- Air inlets
- Heating
- Cooling
- Humidity
- Feed
- Water
- Time switches
- Light clocks
- Heat exchanger
- Bird weighing

ORION-PL

ORION-PL was specifically designed for poultry houses with laying hens in enriched cages or colony housing. ORION-PL offers feed options per circuit and extra options for egg counting (per row and level). By continuously monitoring the number of eggs, ORION-PL can easily regulate the speed of the egg belts in the poultry house, thereby optimising egg flow.

Similar functionality as ORION-PB, with the following extras:

- Manure drying
- Egg counting (rows/levels)
- Feed (rows/levels)

ORION-PS

ORION-PS was specifically developed for poultry houses with laying hens in free-range nests or aviaries and includes extra light switches to ensure the animals return to their nests in time. ORION-PS can also control the nests (and popholes) and register the egg counting at poultry house level.

Similar functionality as ORION-PB, with the following extras:

- Manure drying
- Egg counting at poultry house level
- Nest control
- Popholes
- Extra light switches

ORION-PP

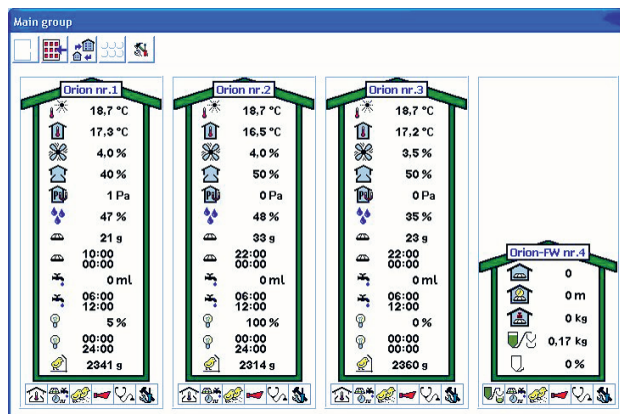
ORION-PP was specifically designed for hens in breeding houses. Cocks and hens can be fed separately with a different feed composition. ORION-PP can also differentiate between the weight of cocks and hens. By monitoring their weight and feed regimen, a perfect ratio of laying percentage and high fertility can be achieved.

Similar functionality as ORION-PB, with the following extras:

- Feed (hoppers)
- Livestock weight (roosters/hens)
- Manure drying
- Egg counting
- Nest control

Rainbow+

The Rainbow+ management program can be used to fully control the associated ORION computers. All of the data that is accessible and adjustable on the ORION computer can also be requested and changed using the Rainbow+ program. Data can be consulted in the form of clear diagrams and graphs, which gives you an instant overview of the settings used for a particular operation.



Remote+

Remote+ allows you to control your Hotraco Agri computers from a distance. After installing the software on your smartphone, you can connect to the online SmartLink-RM. Once you are connected, you can operate all ORION/ CYGNUS and SIRIUS devices on the CAN-Backbone. The buttons and screens are exactly the same as those on the computer, which makes them easy to use.

